

WATER & SEWER PLANS

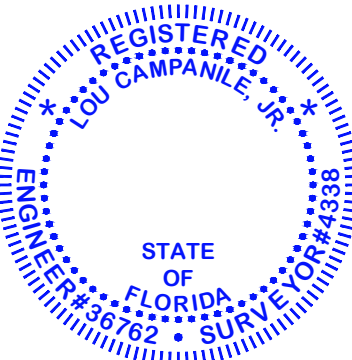
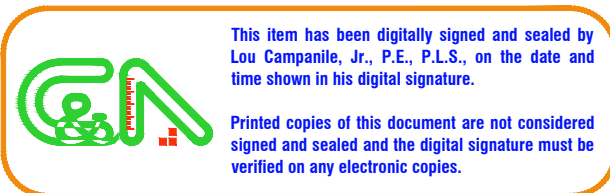
ELIAS APARTMENT BUILDING

218 SE 23 AVENUE
POMPANO BEACH, FLORIDA 33062-5304
FOLIO #484236013400

DRC

PZ24-12000023
07/16/2025

ALL ELEVATIONS SHOWN HEREON ARE
BASED ON NORTH AMERICAN VERTICAL
DATUM (NAVD - 1988).



CAMPANILE & ASSOCIATES, INC.
ENGINEERS PLANNERS SURVEYORS
6420 MAHI DRIVE
CORAL GABLES, FLORIDA 33158-1841
TEL: (305) 971-1988
LB 1678

5/14/25
Lon Campanile, Jr.
Professional Engineer No. 38792
Professional Surveyor No. 4338
State of Florida

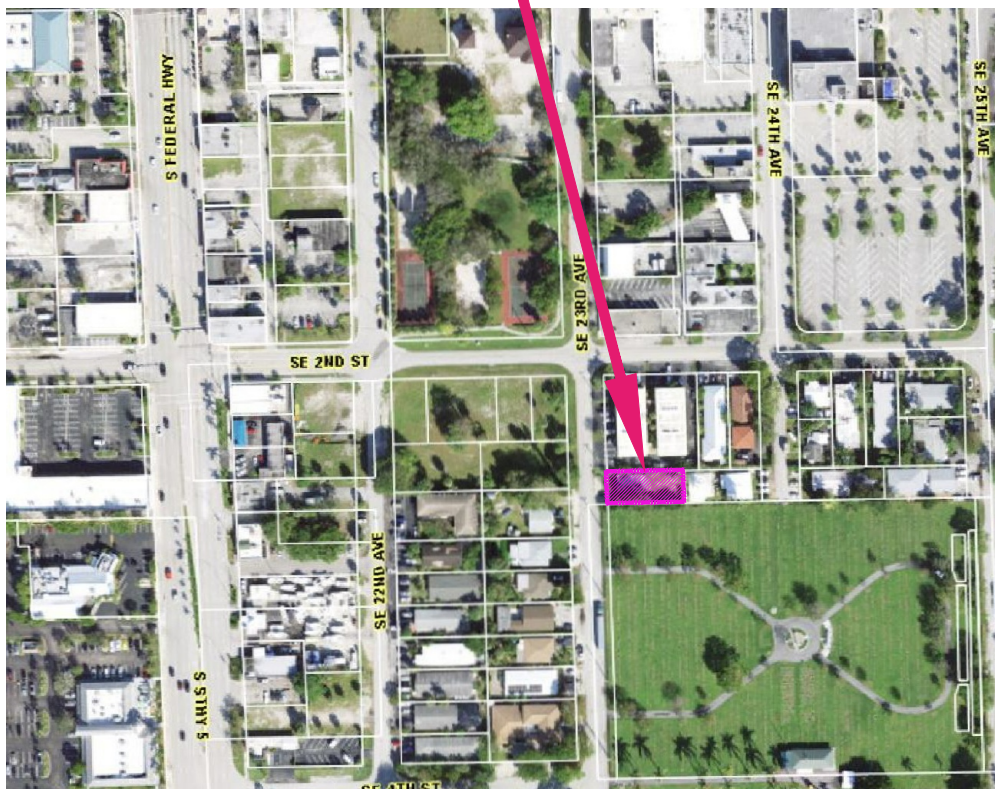
for
RJS ARCHITECTS, INC.

ELIAS APARTMENT BUILDING
216 SE 23 AVENUE
POMPANO BEACH, FLORIDA 33062-5304
COVER SHEET

| | |
|-------------|---------|
| PROJECT NO. | 5391 |
| DATE | 10/9/24 |
| REVISIONS | |
| | |
| | |
| | |

DRAWING
WS-1
SHEET
1 OF 10

THIS PROJECT



LOCATION SKETCH
1" = 300'

INDEX OF DRAWINGS

| | |
|-------|--|
| WS-1 | COVER SHEET |
| WS-2 | WATER & SEWER PLAN |
| WS-3 | CITY OF POMPAO BEACH WATER DETAILS |
| WS-4 | CITY OF POMPAO BEACH WATER DETAILS |
| WS-5 | CITY OF POMPAO BEACH WATER DETAILS |
| WS-6 | CITY OF POMPAO BEACH SEWER DETAILS |
| WS-7 | CITY OF POMPAO BEACH SEWER DETAILS |
| WS-8 | CITY OF POMPAO BEACH WATER REUSE DETAILS |
| WS-9 | CITY OF POMPAO BEACH WATER REUSE DETAILS |
| WS-10 | CITY OF POMPAO BEACH WATER REUSE DETAILS |